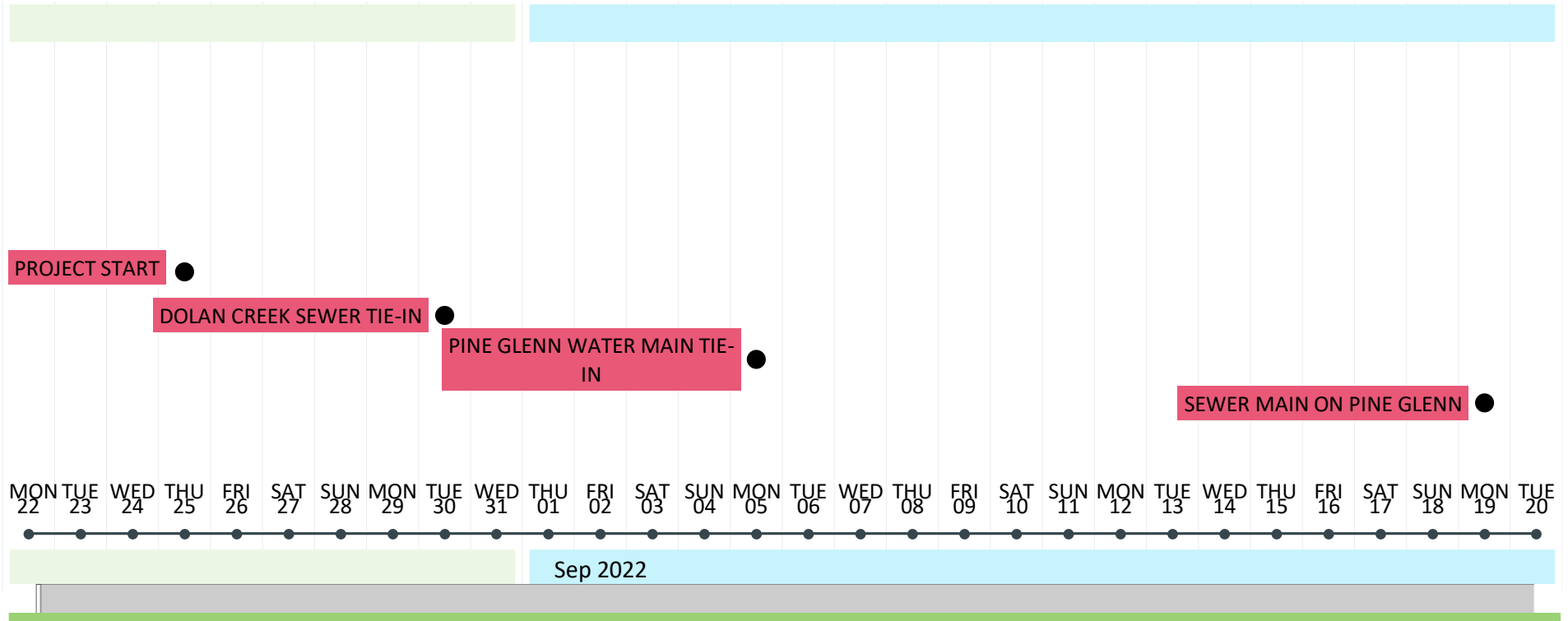


# PINE GLENN



ENTER START DATE:

8/22/2022

ACTIVITY	START	END	NOTES
Project Start	8/22/2022	8/25/2022	MOBILIZATION SET UP TRAFFIC CONTROL
DOLAN CREEK SEWER TIE-IN	8/23/2022	8/30/2022	EXTEND SEWER MAIN BEYOND PINE GLENN/DOLAN CREEK INTERSECTION
PINE GLENN WATER MAIN TIE-IN	8/29/2022	9/5/2022	WATER MAIN TIE IN EXTEND PAST PINE GLENN/DOLAN CREEK INTERSECTION
SEWER MAIN ON PINE GLENN	9/5/2022	9/19/2022	INSTALL SEWER MAIN FROM MH4 TO MH 5

ACTIVITY	START	END	NOTES
WATERMAIN ON PINE GLENN	9/19/2022	9/28/2022	WATER MAIN FROM 108 TO END
GRADE	9/29/2022	10/4/2022	IMPORT AND GRADE
GRAVEL	10/4/2022	10/8/2022	GRAVEL AND FINE GRADE FOR ASPHALT
TIE-IN WATER SERVICES	10/12/2022	10/17/2022	SERVICE LINE TIE-IN
ASPHALT	10/17/2022	10/20/2022	PAVING
SEEDING	10/20/2022	10/22/2022	SEEDING
CONCRETE	10/17/2022	10/19/2022	
Project End	11/2/2022		